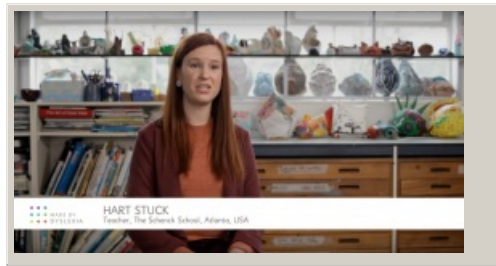


# Provide time

Allowing additional time to complete school work and take tests can have a huge impact on a dyslexic student's ability to succeed.

Teachers share tips to support success.



Video hosted on Youtube <http://youtu.be/NdrBpOV67DY>

Closed Captions

**Source:**

[Made By Dyslexia \(UK\)](#)

[https://www.youtube.com/channel/UCLBUsgxhf\\_otK\\_qKoZnPopA/featured](https://www.youtube.com/channel/UCLBUsgxhf_otK_qKoZnPopA/featured)

This information was downloaded/printed from the Ministry of Education's website "Inclusive Education". Except where otherwise noted it is Crown Copyright 2018.

Information on the Inclusive Education website is regularly updated so we recommend you check the website version of this information to ensure it remains current.

