

Inclusive Education

From

Guide: [Developing an inclusive classroom culture](#)

Strategy: [Take a community approach](#)

Suggestion: [Involve past students](#)

Date

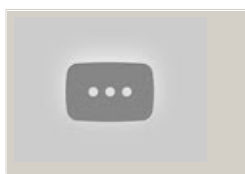
10 May 2024

Link

inclusive.tki.org.nz/guides/developing-an-inclusive-classroom-culture/involve-past-students

Learn from others

An adult with autism talks about how his school experiences set him up to succeed.



Video hosted on Youtube <http://youtu.be/MT33QhYfRb8>

Closed Captions

Source:

[Chrissie Butler \(NZ\)](#)

<http://youtu.be/MT33QhYfRb8>

This information was downloaded/printed from the Ministry of Education's website "Inclusive Education". Except where otherwise noted it is Crown Copyright 2018.

Information on the Inclusive Education website is regularly updated so we recommend you check the website version of this information to ensure it remains current.

